



Panini Vision X Scanner Installation Guide

BankTennessee

www.banktennessee.com

Panini Vision X Scanner Installation

08/30/2024

*Make sure the merchant has all old scanners uninstalled prior to the meeting. On the search bar within the task bar on the desktop, type in appqiz.cpl for the uninstall settings to open. *

1. Within the merchant site on WebRDC, make sure the Scanner IP address is updated with adding in localhost:4434 to the text field.

Name	Description	Location Id	Scanner	Deposits	Scanner IP
A Everest AXR	BIGM03	3	Panini Everest AXR	0	localhost:44343

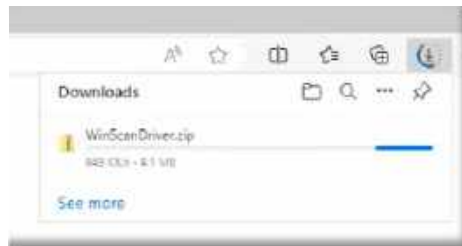
2. To install the scanner, click on the Configuration tab and then select the Installation function.



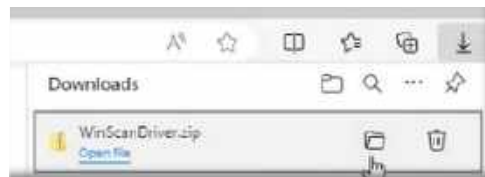
- a. Click on Driver Download: + Download Scan Driver.



- i. The application will start to download the zipped files. (The below screenshot is using Microsoft Edge)

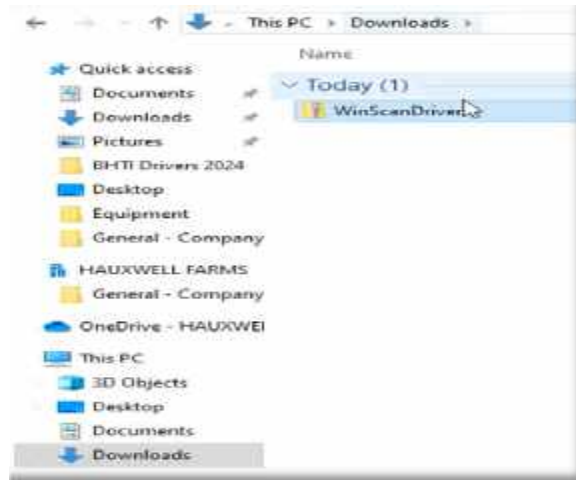


- ii. Once the download is completed, it can be opened from the browser or from the file explorer download section.

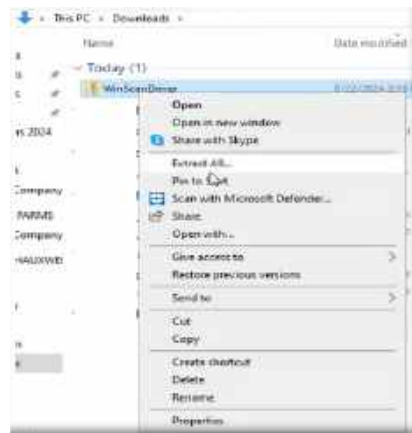


Panini Vision X Scanner Installation

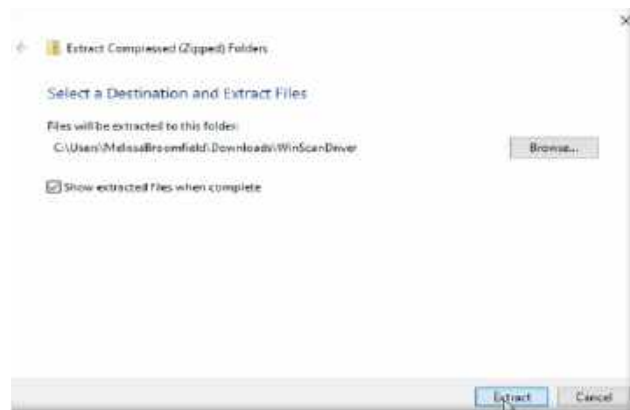
08/30/2024



iii. Right click on the WinScanDriver zipped file and click on Extract All.

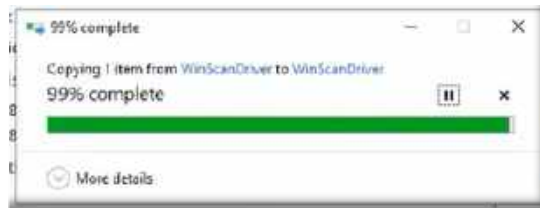


iv. Click on Extract and let it process.



Panini Vision X Scanner Installation

08/30/2024



v. Open the file named Panini Everest Engine Setup

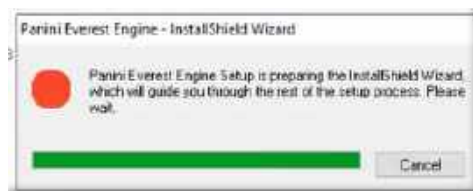
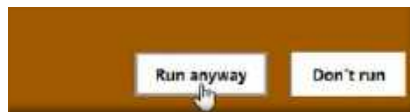


vi. Click on More info.



vii. Click Run Anyway for the program to complete the next steps

1. If the computer has an antivirus to request access to continue, follow the approval process.



viii. Click on the Next function



Panini Vision X Scanner Installation

08/30/2024

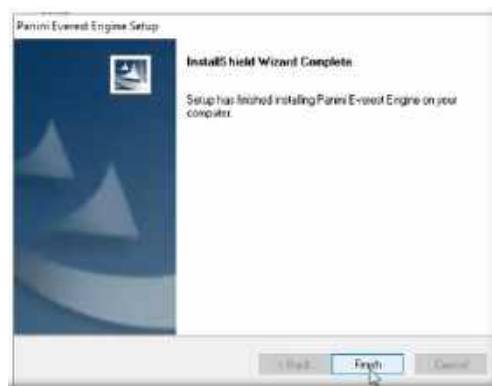
- ix. Click the radio button next to “I accept the terms of the license agreement” and then select the Next function.



- x. If the radio button is not selected for Complete, please select it and then click the Next function.



- xi. Click on the Finish function.



- b. Minimize all applications on the desktop and locate the Panini icon. Open the link and select Configuration.

Panini Vision X Scanner Installation

08/30/2024



i. Sign into the website with the below login and password.

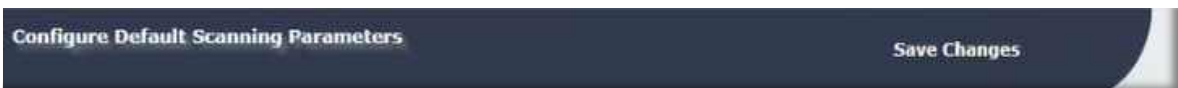
1. Login: Panini
2. Password: 3v3r3st_2023!



ii. Click on Default Parameters. Change the word TRUE that is highlighted in the screen below to FALSE.

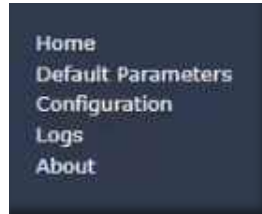


iii. Click Save Changes and then click on the Home function.



Panini Vision X Scanner Installation

08/30/2024



- iv. Plug in the scanner to the computer.
- v. Click on the connects to connect the scanner to the computer.

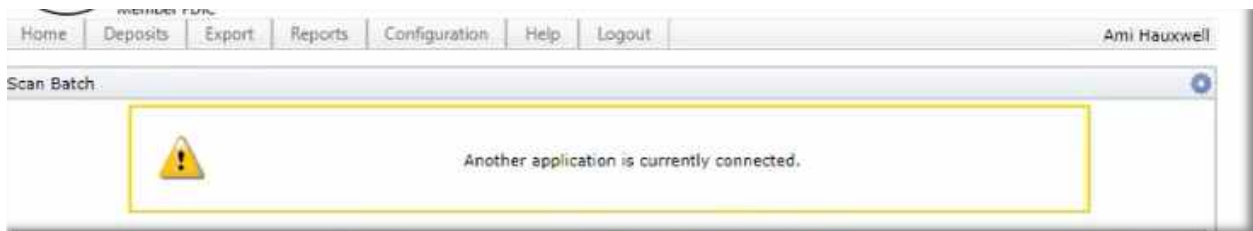


- 1. Disconnect the scanner by clicking on the cords to disconnect it.

(On the screen the cord may show plugged into the outlet)



- 3. Start the deposit training within WebRDC.
 - a. If the below error shows within WebRDC, have the computer restarted before completing the next steps of the deposit training.



- b. If the below error appears, restart the computer.

